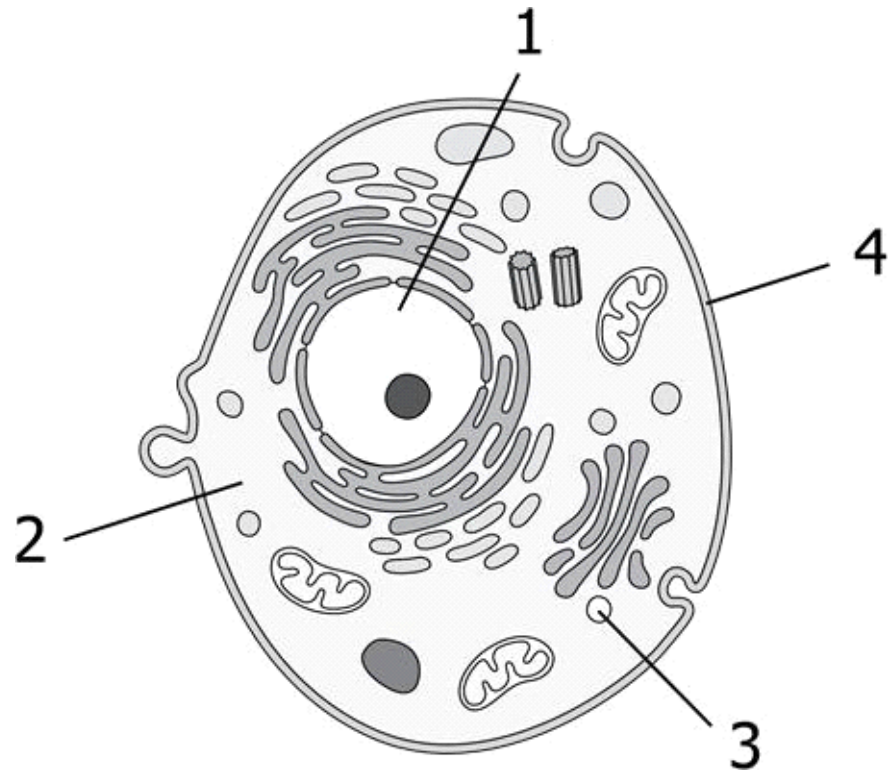


- 1 **A student's science fair project tested which brand of microwave popcorn had the fewest unpopped kernels. Which is the independent variable?**
- A The brand of popcorn
  - B The size of the bag of popcorn
  - C The microwave that was used
  - D The cooking time of the popcorn
- 2 **A student designed an airplane for an airplane contest. First, he drew out a plan. Then, he followed his design and folded his paper to make the airplane. He made many examples and labeled them. He practiced using them all. Why did he make more than one example?**
- F He had extra time before the contest.
  - G He wanted to see which would fly the best.
  - H He liked making paper airplanes.
  - J He kept messing up.
- 3 **What jelly-like fluid surrounds the organelles of a cell?**
- A Vacuole
  - B Cell membrane
  - C Cytoplasm
  - D Chloroplast

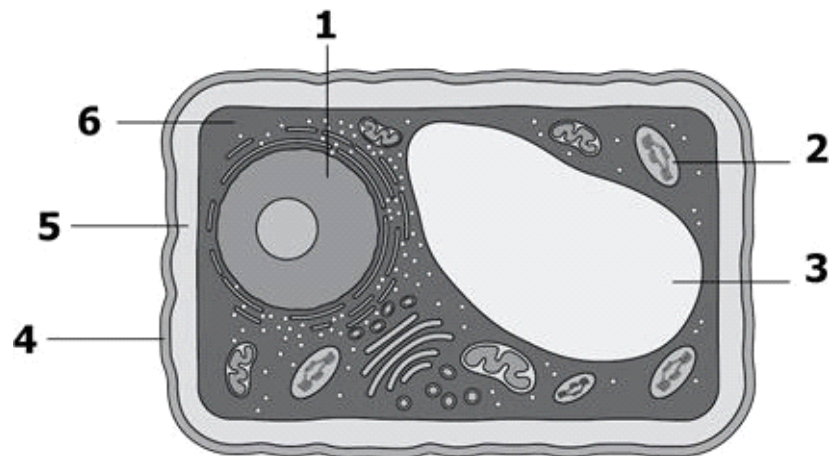
4



**Which part of the diagram stores food, water, and waste?**

- F 4
- G 2
- H 1
- J 3

5



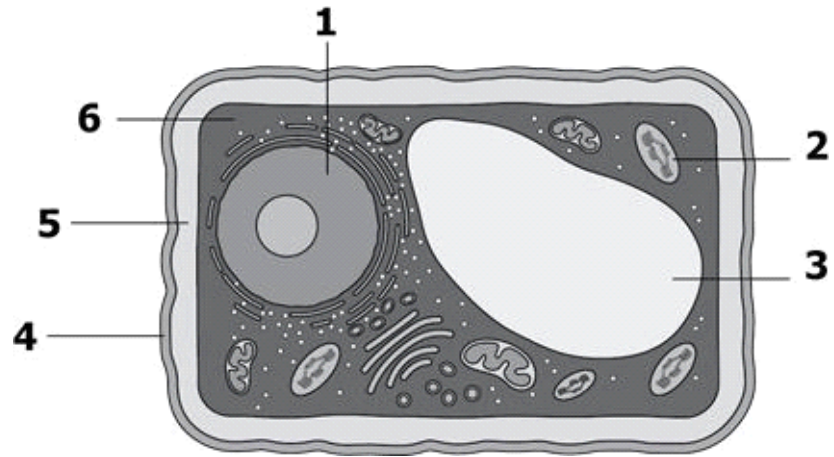
**Which part of the diagram is responsible for photosynthesis?**

- A 3
- B 1
- C 2
- D 4

6 **What part of the cell controls all cell functions?**

- F Chloroplast
- G Nucleus
- H Vacuole
- J Cytoplasm

7



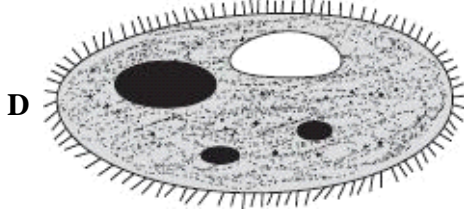
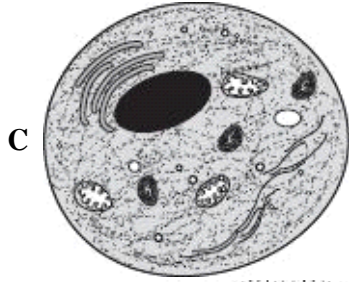
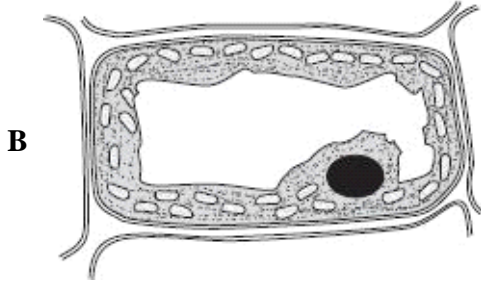
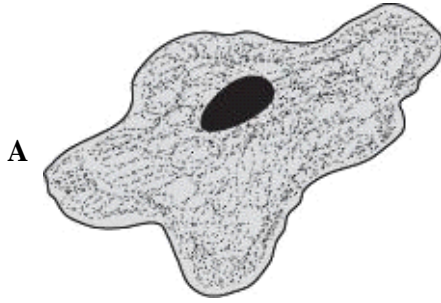
**What part of the diagram provides support and structure for the cell?**

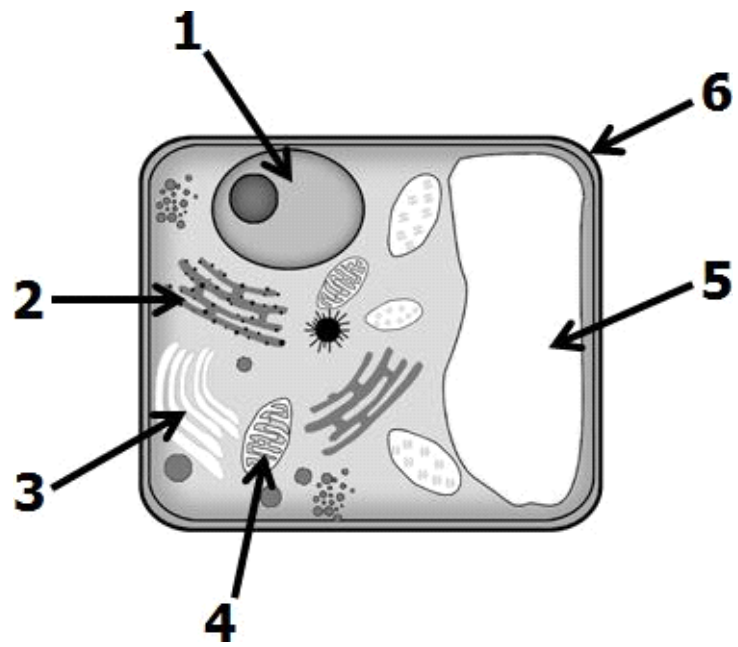
- A 6
- B 5
- C 3
- D 4

8 **Which structure surrounds and protects an animal cell?**

- F Vacuole
- G Cytoplasm
- H Cell membrane
- J Nucleus

9 Which of these cells *most likely* came from a plant?





**What part of the plant cell represents the nucleus?**

- F Section 4
- G Section 1
- H Section 2
- J Section 3